

# *PRACTICAL BASED MUSIC SCHEME FOR PRIMARY SCHOOLS*

## **AUTUMN**



COMPILED BY:POPOOLA A. SAMUEL

The following scheme is designed to enhance practical music learning target

# PRACTICAL BASED MUSIC SCHEME FOR PRIMARY SCHOOLS

CLASS: GRADE: EARLY YEARS

WEEK / TOPIC OUTLINE	SUGGESTED TEACHING METHODS / ACTIVITIES	PROJECT-BASED ACTIVITIES	SUGGESTED RESOURCES
<b>1. MUSIC AND NOISE</b> <ul style="list-style-type: none"> <li>▪ Meaning of music</li> <li>▪ Meaning of noise</li> </ul> <b>MUSICAL INSTRUMENTS</b> <ul style="list-style-type: none"> <li>▪ Identification of various musical instruments</li> </ul> <ul style="list-style-type: none"> <li>▪ <b>RHYTHM</b></li> </ul>	<ul style="list-style-type: none"> <li>- Scaffolding</li> <li>- Enquiry</li> <li>- Questioning</li> <li>- Expository</li> <li>- Group work/project</li> </ul>	<ul style="list-style-type: none"> <li>- Identify sources of music and Noise</li> </ul>	<ul style="list-style-type: none"> <li>- Internet</li> <li>- PowerPoint</li> <li>- Videos</li> <li>- Musical instruments</li> </ul>
<b>5-7. INTRODUCTION TO RECORDER</b>	<ul style="list-style-type: none"> <li>- Scaffolding</li> <li>- Enquiry</li> <li>- Questioning</li> <li>- Expository</li> <li>- Group work/project</li> </ul>	Identifying the recorder and playing according to rhythm	Musical instruments
<b>8-9. EAR TUNING</b> Singing according to pitch.-Rhymes Traditional folk songs and rhymes.	<ul style="list-style-type: none"> <li>- Scaffolding</li> <li>- Enquiry</li> <li>- Questioning</li> <li>- Expository</li> </ul>	Singing according to pitch	<ul style="list-style-type: none"> <li>- Internet</li> <li>- PowerPoint</li> <li>- Videos</li> <li>- Musical instruments</li> </ul>
<b>10-12. DRUMMING PATTERN</b>	<ul style="list-style-type: none"> <li>- Scaffolding</li> <li>- Enquiry</li> <li>- Questioning</li> <li>- Expository</li> </ul>	Following rhythm to play on the Drum	<ul style="list-style-type: none"> <li>- Internet</li> <li>- PowerPoint</li> <li>- Videos</li> <li>- Musical instruments</li> </ul>
<b>13. REVISION</b>	-		-

COMPILED BY:POPOOLA A. SAMUEL

The following scheme is designed to enhance practical music learning target

# PRACTICAL BASED MUSIC SCHEME FOR PRIMARY SCHOOLS



CLASS: GRADE 1, 2

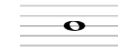
WEEK / TOPIC OUTLINE	SUGGESTED TEACHING METHODS / ACTIVITIES	PROJECT-BASED ACTIVITIES	SUGGESTED RESOURCES
<b>1-4 INTRODUCTION TO STAFF PLAYING</b> <ul style="list-style-type: none"> <li>▪ Sound</li> <li>▪ Staff/ Music Alphabets</li> <li>▪ Clef signs, Bar lines</li> <li>▪ Double Bar line, Key signature.</li> </ul>	<ul style="list-style-type: none"> <li>- Scaffolding</li> <li>- Enquiry</li> <li>- Questioning</li> <li>- Expository</li> <li>- Group work/project</li> </ul>	<ul style="list-style-type: none"> <li>- Identify any of the following signs on the staff</li> </ul>	<ul style="list-style-type: none"> <li>- Internet</li> <li>- PowerPoint</li> <li>- Videos</li> </ul>
<b>5-7 PRACTICALS</b> <ul style="list-style-type: none"> <li>▪ Rest and value</li> <li>▪ Individual pieces</li> <li>▪ Traditional folk songs.</li> <li>▪ Traditional musical instruments</li> </ul>	<ul style="list-style-type: none"> <li>- Scaffolding</li> <li>- Enquiry</li> <li>- Questioning</li> <li>- Expository</li> <li>- Group work/project</li> </ul>	<ul style="list-style-type: none"> <li>- Play A Given Piece On The Staff, Using The Musical Instruments</li> </ul>	<ul style="list-style-type: none"> <li>- Internet</li> <li>- PowerPoint</li> <li>- Videos</li> </ul>
<b>8-11 VOICE TESTS AND CHOIR REHEARSALS</b> Choral singing Dance- types and patterns	<ul style="list-style-type: none"> <li>- Scaffolding</li> <li>- Enquiry</li> <li>- Questioning</li> <li>- Expository</li> <li>- Group work/project</li> </ul>	<ul style="list-style-type: none"> <li>- To sing With Dexterity</li> <li>- Master some traditional and contemporary dance steps.</li> </ul>	<ul style="list-style-type: none"> <li>- Videos</li> </ul>
<b>12/13</b> <ul style="list-style-type: none"> <li>▪ REVISION</li> <li>▪ EXAMINATION</li> </ul>			

GRANDEUR  
MUSICALS

COMPILED BY:POPOOLA A. SAMUEL

The following scheme is designed to enhance practical music learning target

# PRACTICAL BASED MUSIC SCHEME FOR PRIMARY SCHOOLS



CLASS: GRADE 3, 4

WEEK / TOPIC OUTLINE	SUGGESTED TEACHING METHODS / ACTIVITIES	PROJECT-BASED ACTIVITIES	SUGGESTED RESOURCES
<b>1-4 SCALES AND ARPEGGIOS</b> <ul style="list-style-type: none"> <li>▪ Major scale</li> <li>▪ Minor scale</li> <li>▪ Arpeggios</li> <li>▪ Chromatic scales</li> </ul>	<ul style="list-style-type: none"> <li>- Scaffolding</li> <li>- Enquiry</li> <li>- Questioning</li> <li>- Expository</li> <li>- Group work/project</li> </ul>	<ul style="list-style-type: none"> <li>- Play Major and minor scales with arpeggios</li> </ul>	<ul style="list-style-type: none"> <li>- Internet</li> <li>- PowerPoint</li> <li>- Videos</li> </ul>
<b>5-8 INDIVIDUAL PIECES</b> <ul style="list-style-type: none"> <li>▪ Orchestration</li> <li>▪ Traditional folk song, origin and styles</li> </ul>	<ul style="list-style-type: none"> <li>- Scaffolding</li> <li>- Enquiry</li> <li>- Questioning</li> <li>- Expository</li> <li>- Group work/project</li> </ul>	<ul style="list-style-type: none"> <li>- Play individual orchestra pieces with dexterity.</li> </ul>	<ul style="list-style-type: none"> <li>- Internet</li> <li>- PowerPoint</li> <li>- Videos</li> </ul>
<b>9-11 VOCAL PIECES IN PARTS</b> <ul style="list-style-type: none"> <li>▪ Allocation into parts</li> <li>▪ Solfa notation</li> <li>▪ Choral singing</li> </ul>	<ul style="list-style-type: none"> <li>- Scaffolding</li> <li>- Enquiry</li> <li>- Questioning</li> <li>- Expository</li> <li>- Group work/project</li> </ul>	<ul style="list-style-type: none"> <li>- Sing according to voice parts</li> </ul>	<ul style="list-style-type: none"> <li>- Videos</li> </ul>
<b>12-13</b> <ul style="list-style-type: none"> <li>▪ REVISION/EXAMINATION</li> </ul>			

COMPILED BY: POPOOLA A. SAMUEL

The following scheme is designed to enhance practical music learning target

# PRACTICAL BASED MUSIC SCHEME FOR PRIMARY SCHOOLS

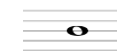
CLASS: GRADE 5, 6

WEEK / TOPIC OUTLINE	SUGGESTED TEACHING METHODS / ACTIVITIES	PROJECT-BASED ACTIVITIES	SUGGESTED RESOURCES
<b>1- 4 SCALES AND ARPEGGIOS</b> <ul style="list-style-type: none"> <li>▪ Major scales</li> <li>▪ Minor scales</li> <li>▪ Chromatic scales</li> <li>▪ Arpeggios</li> </ul>	<ul style="list-style-type: none"> <li>- Scaffolding</li> <li>- Enquiry</li> <li>- Questioning</li> <li>- Expository</li> <li>- Group work/project</li> </ul>	<ul style="list-style-type: none"> <li>- Play all types of scales on the instrument.</li> </ul>	<ul style="list-style-type: none"> <li>- Musical Instruments</li> <li>- Internet</li> <li>- PowerPoint</li> <li>- Videos</li> </ul>
<b>5-7 INSTRUMENT PERFORMANCES</b> <ul style="list-style-type: none"> <li>▪ Individual pieces</li> <li>▪ Application of scales</li> <li>▪ Playing applying tonic solfa notation</li> </ul>	<ul style="list-style-type: none"> <li>- Scaffolding</li> <li>- Enquiry</li> <li>- Questioning</li> <li>- Expository</li> <li>- Group work/project</li> </ul>	<ul style="list-style-type: none"> <li>- Play Musical Scores Applying The Musical Signs And Symbols</li> </ul>	<ul style="list-style-type: none"> <li>- Internet</li> <li>- PowerPoint</li> <li>- Videos</li> </ul>
<b>8-11 VOCAL PERFORMANCES</b> <ul style="list-style-type: none"> <li>▪ Voice parts allocation</li> <li>▪ Singing applying tonic solfa</li> <li>▪ Choral singing</li> <li>▪ Opera/cantata</li> </ul>	<ul style="list-style-type: none"> <li>- Scaffolding</li> <li>- Enquiry</li> <li>- Questioning</li> <li>- Expository</li> <li>- Group work/project</li> </ul>	<ul style="list-style-type: none"> <li>- Sing various vocal pieces applying tonic solfa notation</li> <li>- Cantata and opera performances</li> </ul>	<ul style="list-style-type: none"> <li>- Videos</li> <li>- Powerpoints</li> </ul>
<b>12/13</b> <ul style="list-style-type: none"> <li>▪ REVISION</li> <li>▪ EXAMINATION</li> </ul>			

COMPILED BY:POPOOLA A. SAMUEL

The following scheme is designed to enhance practical music learning target

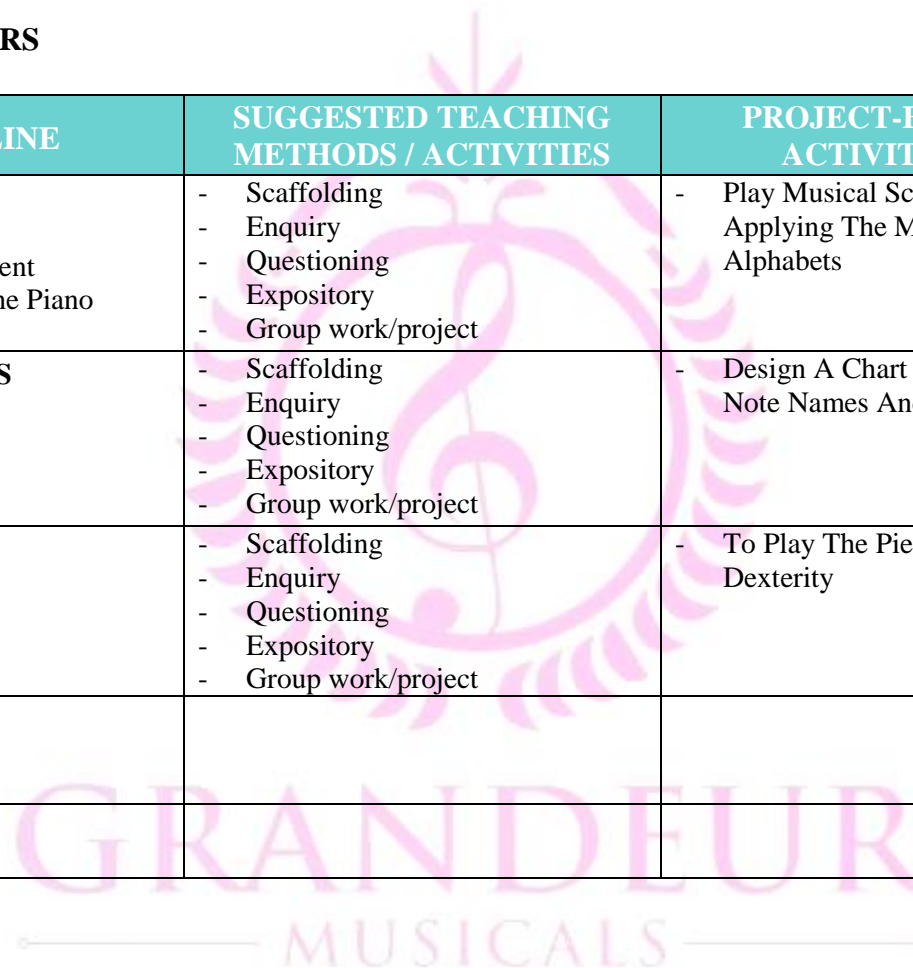
# PRACTICAL BASED MUSIC SCHEME FOR PRIMARY SCHOOLS



## SPRING

CLASS: GRADE: EARLY YEARS

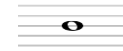
WEEK / TOPIC OUTLINE	SUGGESTED TEACHING METHODS / ACTIVITIES	PROJECT-BASED ACTIVITIES	SUGGESTED RESOURCES
<b>1-4 MUSICAL ALPHABETS</b> <ul style="list-style-type: none"> <li>▪ Sing Using The Alphabets</li> <li>▪ Application On The Instrument</li> <li>▪ Identifying Alphabets On The Piano</li> </ul>	<ul style="list-style-type: none"> <li>- Scaffolding</li> <li>- Enquiry</li> <li>- Questioning</li> <li>- Expository</li> <li>- Group work/project</li> </ul>	<ul style="list-style-type: none"> <li>- Play Musical Scores</li> <li>- Applying The Musical Alphabets</li> </ul>	<ul style="list-style-type: none"> <li>- Internet</li> <li>- PowerPoint</li> <li>- Videos</li> <li>- Musical instruments</li> </ul>
<b>5-7 NOTE NAMES AND VALUES</b> <ul style="list-style-type: none"> <li>▪ Note Names</li> <li>▪ Values</li> </ul>	<ul style="list-style-type: none"> <li>- Scaffolding</li> <li>- Enquiry</li> <li>- Questioning</li> <li>- Expository</li> <li>- Group work/project</li> </ul>	<ul style="list-style-type: none"> <li>- Design A Chart Having The Note Names And Values</li> </ul>	<ul style="list-style-type: none"> <li>- Internet</li> <li>- PowerPoint</li> <li>- Videos</li> </ul>
<b>8-10 PRACTICALS</b> <ul style="list-style-type: none"> <li>▪ Nursery Rhyme Playing</li> </ul>	<ul style="list-style-type: none"> <li>- Scaffolding</li> <li>- Enquiry</li> <li>- Questioning</li> <li>- Expository</li> <li>- Group work/project</li> </ul>	<ul style="list-style-type: none"> <li>- To Play The Pieces With Dexterity</li> </ul>	<ul style="list-style-type: none"> <li>- Videos</li> </ul>
<b>11-13</b> <ul style="list-style-type: none"> <li>▪ REVISION</li> <li>▪ EXAMINATION</li> </ul>			



COMPILED BY: POPOOLA A. SAMUEL

The following scheme is designed to enhance practical music learning target

# PRACTICAL BASED MUSIC SCHEME FOR PRIMARY SCHOOLS



**CLASS: GRADE 1, 2**

WEEK / TOPIC OUTLINE	SUGGESTED TEACHING METHODS / ACTIVITIES	PROJECT-BASED ACTIVITIES	SUGGESTED RESOURCES
<b>1-5 HOW INSTRUMENTS WORK</b> <ul style="list-style-type: none"> <li>▪ Strings</li> <li>▪ Wind</li> <li>▪ Percussion</li> <li>▪ African instrument classification</li> </ul>	<ul style="list-style-type: none"> <li>- Scaffolding</li> <li>- Enquiry</li> <li>- Questioning</li> <li>- Expository</li> <li>- Group work/project</li> </ul>	<ul style="list-style-type: none"> <li>- Design An Instrument Applying Any Of The Principles</li> </ul>	<ul style="list-style-type: none"> <li>- Internet</li> <li>- PowerPoint</li> <li>- Videos</li> </ul>
<b>5-8 READING THE STAFF</b> <ul style="list-style-type: none"> <li>▪ Key signature</li> <li>▪ Time signature</li> <li>▪ Names of lines and spaces</li> </ul>	<ul style="list-style-type: none"> <li>- Scaffolding</li> <li>- Enquiry</li> <li>- Questioning</li> <li>- Expository</li> <li>- Group work/project</li> </ul>	<ul style="list-style-type: none"> <li>- Play A Given Piece On The Staff, Using The Musical Instruments</li> </ul>	<ul style="list-style-type: none"> <li>- Internet</li> <li>- PowerPoint</li> <li>- Videos</li> </ul>
<b>9-11 PRACTICALS</b> <ul style="list-style-type: none"> <li>▪ Orchestra pieces</li> <li>▪ INSTRUMENT SOLOS.</li> </ul>	<ul style="list-style-type: none"> <li>- Scaffolding</li> <li>- Enquiry</li> <li>- Questioning</li> <li>- Expository</li> <li>- Group work/project</li> </ul>	<ul style="list-style-type: none"> <li>- To Play The Pieces With Dexterity</li> </ul>	<ul style="list-style-type: none"> <li>- Videos</li> </ul>
<b>12/13</b> <ul style="list-style-type: none"> <li>▪ REVISION</li> <li>▪ EXAMINATION</li> </ul>			

COMPILED BY:POPOOLA A. SAMUEL

The following scheme is designed to enhance practical music learning target



# PRACTICAL BASED MUSIC SCHEME FOR PRIMARY SCHOOLS



**CLASS: GRADE 3, 4**

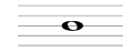
WEEK / TOPIC OUTLINE	SUGGESTED TEACHING METHODS / ACTIVITIES	PROJECT-BASED ACTIVITIES	SUGGESTED RESOURCES
<b>1-4 MUSICAL SIGNS, SYMBOLS AND MEANING</b> <ul style="list-style-type: none"> <li>▪ Dynamics</li> <li>▪ Signs</li> <li>▪ Symbols</li> </ul>	<ul style="list-style-type: none"> <li>- Scaffolding</li> <li>- Enquiry</li> <li>- Questioning</li> <li>- Expository</li> <li>- Group work/project</li> </ul>	<ul style="list-style-type: none"> <li>- Play Musical Scores</li> <li>- Applying The Musical Signs And Symbols</li> </ul>	<ul style="list-style-type: none"> <li>- Internet</li> <li>- PowerPoint</li> <li>- Videos</li> </ul>
<b>5-8 SINGING</b> <ul style="list-style-type: none"> <li>▪ Vocal range</li> <li>▪ Opera/cantata. –DRAMA IN MUSIC.</li> <li>▪ Choral singing</li> </ul>	<ul style="list-style-type: none"> <li>- Scaffolding</li> <li>- Enquiry</li> <li>- Questioning</li> <li>- Expository</li> <li>- Group work/project</li> </ul>	<ul style="list-style-type: none"> <li>- Reflect On The Lesson By Coming Up With A Vocal Solo Performance</li> <li>- A Short Opera/cantata.</li> </ul>	<ul style="list-style-type: none"> <li>- Internet</li> <li>- PowerPoint</li> <li>- Videos</li> </ul>
<b>9-11 PRACTICALS</b> <ul style="list-style-type: none"> <li>▪ PIECES PLAYIING</li> </ul>	<ul style="list-style-type: none"> <li>- Scaffolding</li> <li>- Enquiry</li> <li>- Questioning</li> <li>- Expository</li> <li>- Group work/project</li> </ul>	<ul style="list-style-type: none"> <li>- To Play The Pieces With Dexterity</li> </ul>	<ul style="list-style-type: none"> <li>- Videos</li> </ul>
<b>12-13</b> <ul style="list-style-type: none"> <li>▪ REVISION/EXAMINATION</li> </ul>			

COMPILED BY:POPOOLA A. SAMUEL

The following scheme is designed to enhance practical music learning target



# PRACTICAL BASED MUSIC SCHEME FOR PRIMARY SCHOOLS



CLASS: GRADE 5, 6

WEEK / TOPIC OUTLINE	SUGGESTED TEACHING METHODS / ACTIVITIES	PROJECT-BASED ACTIVITIES	SUGGESTED RESOURCES
<b>1- 4 COMPOSER FILE</b> <ul style="list-style-type: none"> <li>▪ Handel</li> <li>▪ Bach</li> <li>▪ Mozart</li> <li>▪ Beethoven</li> <li>▪ Music composition.</li> </ul>	<ul style="list-style-type: none"> <li>- Scaffolding</li> <li>- Enquiry</li> <li>- Questioning</li> <li>- Expository</li> <li>- Group work/project</li> </ul>	<ul style="list-style-type: none"> <li>- Play A Piece Composed By Any Of The Composers</li> </ul>	<ul style="list-style-type: none"> <li>- Musical Instruments</li> <li>- Internet</li> <li>- PowerPoint</li> <li>- Videos</li> </ul>
<b>5-8 MUSICAL SIGNS, SYMBOLS AND MEANING</b> <ul style="list-style-type: none"> <li>▪ Dynamics</li> <li>▪ Signs</li> <li>▪ Symbols</li> </ul>	<ul style="list-style-type: none"> <li>- Scaffolding</li> <li>- Enquiry</li> <li>- Questioning</li> <li>- Expository</li> <li>- Group work/project</li> </ul>	<ul style="list-style-type: none"> <li>- Play Musical Scores Applying The Musical Signs And Symbols</li> </ul>	<ul style="list-style-type: none"> <li>- Internet</li> <li>- PowerPoint</li> <li>- Videos</li> </ul>
<b>8-10 PRACTICALS</b> <ul style="list-style-type: none"> <li>▪ Pieces playing on musical instruments.</li> <li>▪ Production of music by individual</li> <li>▪ Dance 1- contemporary.</li> </ul>	<ul style="list-style-type: none"> <li>- Scaffolding</li> <li>- Enquiry</li> <li>- Questioning</li> <li>- Expository</li> <li>- Group work/project</li> </ul>	<ul style="list-style-type: none"> <li>- To Play The Pieces With Dexterity</li> </ul>	<ul style="list-style-type: none"> <li>- Videos</li> </ul>
<b>11-13</b> <ul style="list-style-type: none"> <li>▪ REVISION</li> <li>▪ EXAMINATION</li> </ul>			

GRANDEUR  
MUSICALS

COMPILED BY: POPOOLA A. SAMUEL

The following scheme is designed to enhance practical music learning target

# PRACTICAL BASED MUSIC SCHEME FOR PRIMARY SCHOOLS

## SUMMER

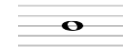
CLASS: GRADE: EARLY YEARS

WEEK / TOPIC OUTLINE	SUGGESTED TEACHING METHODS / ACTIVITIES	PROJECT-BASED ACTIVITIES	SUGGESTED RESOURCES
<b>1-4 NOTE NAME AND VALUES 2</b> <ul style="list-style-type: none"> <li>▪ CROTCHET</li> <li>▪ QUAVER</li> </ul>	<ul style="list-style-type: none"> <li>- Scaffolding</li> <li>- Enquiry</li> <li>- Questioning</li> <li>- Expository</li> <li>- Group work/project</li> </ul>	<ul style="list-style-type: none"> <li>- Play rhymes having the notes</li> </ul>	<ul style="list-style-type: none"> <li>- Internet</li> <li>- PowerPoint</li> <li>- Videos</li> <li>- Musical instruments</li> </ul>
<b>5-7 THE STAFF</b> <ul style="list-style-type: none"> <li>▪ The clef signs (treble and bass)</li> <li>▪ Names of lines and spaces</li> </ul>	<ul style="list-style-type: none"> <li>- Scaffolding</li> <li>- Enquiry</li> <li>- Questioning</li> <li>- Expository</li> <li>- Group work/project</li> </ul>	<ul style="list-style-type: none"> <li>- Make The Staff , <b>Paste The Clef Signs On Them</b></li> </ul>	<ul style="list-style-type: none"> <li>- Internet</li> <li>- PowerPoint</li> <li>- Videos</li> </ul>
<b>8-10 THE PIANO KEYBOARD</b> <ul style="list-style-type: none"> <li>▪ Introduction to whole note playing</li> <li>▪ Playing half, and quarter notes</li> <li>▪ Right and left hand coordination</li> </ul>	<ul style="list-style-type: none"> <li>- Scaffolding</li> <li>- Enquiry</li> <li>- Questioning</li> <li>- Expository</li> <li>- Group work/project</li> </ul>	<ul style="list-style-type: none"> <li>- To Play The Pieces With Dexterity</li> </ul>	<ul style="list-style-type: none"> <li>- Videos</li> </ul>
<b>11-13</b> <ul style="list-style-type: none"> <li>▪ REVISION</li> <li>▪ EXAMINATION</li> </ul>			

COMPILED BY: POPOOLA A. SAMUEL

The following scheme is designed to enhance practical music learning target

# PRACTICAL BASED MUSIC SCHEME FOR PRIMARY SCHOOLS



CLASS: GRADE 1, 2

WEEK / TOPIC OUTLINE	SUGGESTED TEACHING METHODS / ACTIVITIES	PROJECT-BASED ACTIVITIES	SUGGESTED RESOURCES
<b>1-6 SPECIAL MUSICAL NOTES</b> <ul style="list-style-type: none"> <li>▪ Dotted notes and values</li> <li>▪ Slurred notes; meaning and value</li> <li>▪ Tied notes; meaning</li> </ul>	<ul style="list-style-type: none"> <li>- Scaffolding</li> <li>- Enquiry</li> <li>- Questioning</li> <li>- Expository</li> <li>- Group work/project</li> </ul>	<ul style="list-style-type: none"> <li>- CRAFTS CONCERNING THE NOTES.</li> </ul>	<ul style="list-style-type: none"> <li>- Internet</li> <li>- PowerPoint</li> <li>- Videos</li> </ul>
<b>5-7 REST</b> <ul style="list-style-type: none"> <li>▪ Meaning</li> <li>▪ Semibreve, minim and crotchet rests</li> <li>▪ Observing rests, applying in music compositions</li> </ul>	<ul style="list-style-type: none"> <li>- Scaffolding</li> <li>- Enquiry</li> <li>- Questioning</li> <li>- Expository</li> <li>- Group work/project</li> </ul>	<ul style="list-style-type: none"> <li>- Play A Given Piece On The Staff, Using The Musical Instruments and observing rests</li> </ul>	<ul style="list-style-type: none"> <li>- Internet</li> <li>- PowerPoint</li> <li>- Videos</li> </ul>
<b>8-11 LEDGER LINES</b> <ul style="list-style-type: none"> <li>▪ Meaning and uses</li> <li>▪ Application On Instruments</li> </ul>	<ul style="list-style-type: none"> <li>- Scaffolding</li> <li>- Enquiry</li> <li>- Questioning</li> <li>- Expository</li> <li>- Group work/project</li> </ul>	<ul style="list-style-type: none"> <li>- Play a couple of pieces having ledger lines</li> </ul>	<ul style="list-style-type: none"> <li>- Videos</li> </ul>
<b>12-13</b> <ul style="list-style-type: none"> <li>▪ REVISION</li> <li>▪ EXAMINATION</li> </ul>			

COMPILED BY:POPOOLA A. SAMUEL

The following scheme is designed to enhance practical music learning target

# PRACTICAL BASED MUSIC SCHEME FOR PRIMARY SCHOOLS

CLASS: GRADE 3, 4

WEEK / TOPIC OUTLINE	SUGGESTED TEACHING METHODS / ACTIVITIES	PROJECT-BASED ACTIVITIES	SUGGESTED RESOURCES
<b>1-4 SIGHT READING</b> <ul style="list-style-type: none"> <li>▪ Key signature</li> <li>▪ Time signature</li> <li>▪ Values of note/rest</li> <li>▪ Reading a piece of music</li> </ul>	<ul style="list-style-type: none"> <li>- Scaffolding</li> <li>- Enquiry</li> <li>- Questioning</li> <li>- Expository</li> <li>- Group work/project</li> </ul>	<ul style="list-style-type: none"> <li>- Play Musical Scores</li> <li>- Applying The Principle Of Sight Reading</li> </ul>	<ul style="list-style-type: none"> <li>- Internet</li> <li>- PowerPoint</li> <li>- Videos</li> </ul>
<b>5-8 SCIENCE OF MUSICAL SOUND</b> <ul style="list-style-type: none"> <li>▪ Sound waves</li> <li>▪ Playing with sound</li> <li>▪ How sound waves travels</li> <li>▪ Conducting music</li> </ul>	<ul style="list-style-type: none"> <li>- Scaffolding</li> <li>- Enquiry</li> <li>- Questioning</li> <li>- Expository</li> <li>- Group work/project</li> </ul>	<ul style="list-style-type: none"> <li>- Wired Voice Box Construction</li> </ul>	<ul style="list-style-type: none"> <li>- Internet</li> <li>- PowerPoint</li> <li>- Videos</li> </ul>
<b>9-11 PRACTICALS</b> <ul style="list-style-type: none"> <li>▪ Playing in an orchestra rules.</li> <li>▪ Tuning the instrument</li> </ul>	<ul style="list-style-type: none"> <li>- Scaffolding</li> <li>- Enquiry</li> <li>- Questioning</li> <li>- Expository</li> <li>- Group work/project</li> </ul>	<ul style="list-style-type: none"> <li>- Carefully tuning the musical instruments</li> </ul>	<ul style="list-style-type: none"> <li>- Videos</li> </ul>
<b>12-13</b> <b>REVISION</b> <ul style="list-style-type: none"> <li>▪ EXAMINATION</li> </ul>			

COMPILED BY:POPOOLA A. SAMUEL

The following scheme is designed to enhance practical music learning target

# PRACTICAL BASED MUSIC SCHEME FOR PRIMARY SCHOOLS

**CLASS: GRADE 5, 6**

WEEK / TOPIC OUTLINE	SUGGESTED TEACHING METHODS / ACTIVITIES	PROJECT-BASED ACTIVITIES	SUGGESTED RESOURCES
<b>1- 4 SOUND REPRODUCTION</b> <ul style="list-style-type: none"> <li>▪ HOW CDS WORK</li> <li>▪ RECORDING</li> <li>▪ MICROPHONE USAGE</li> <li>▪ COORDINATION</li> </ul>	<ul style="list-style-type: none"> <li>- Scaffolding</li> <li>- Enquiry</li> <li>- Questioning</li> <li>- Expository</li> <li>- Group work/project</li> </ul>	<ul style="list-style-type: none"> <li>- VISIT A RECORDING STUDIO</li> </ul>	<ul style="list-style-type: none"> <li>- Studio equipments</li> <li>- Internet</li> <li>- PowerPoint</li> <li>- Videos</li> </ul>
<b>5-8 CLASSICAL MUSIC</b> <ul style="list-style-type: none"> <li>▪ Classical orchestra music</li> <li>▪ symphony</li> <li>▪ overture</li> <li>▪ sonata</li> <li>▪ chamber music</li> </ul>	<ul style="list-style-type: none"> <li>- Scaffolding</li> <li>- Enquiry</li> <li>- Questioning</li> <li>- Expository</li> <li>- Group work/project</li> </ul>	<ul style="list-style-type: none"> <li>- Watch videos and perform accordingly</li> </ul>	<ul style="list-style-type: none"> <li>- Internet</li> <li>- PowerPoint</li> <li>- Videos</li> </ul>
<b>9-11 PRACTICALS</b> <ul style="list-style-type: none"> <li>▪ CLASSICAL PIECES PLAYING.</li> <li>▪ Chamber orchestra rehearsals</li> </ul>	<ul style="list-style-type: none"> <li>- Scaffolding</li> <li>- Enquiry</li> <li>- Questioning</li> <li>- Expository</li> <li>- Group work/project</li> </ul>	<ul style="list-style-type: none"> <li>- To Play The Pieces With Dexterity</li> </ul>	<ul style="list-style-type: none"> <li>- Videos</li> </ul>
<b>12-13</b> <ul style="list-style-type: none"> <li>▪ REVISION</li> <li>▪ EXAMINATION</li> </ul>			

COMPILED BY:POPOOLA A. SAMUEL

The following scheme is designed to enhance practical music learning target

# *PRACTICAL BASED MUSIC SCHEME FOR PRIMARY SCHOOLS*



COMPILED BY:POPOOLA A. SAMUEL

The following scheme is designed to enhance practical music learning target